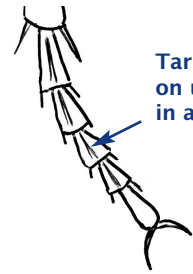


Guides to British Beetles

9. *Pogonus* Driftliners Ground Beetles (Coleoptera; Carabidae)



These are small ground beetles 5.5 - 8.5 mm long with metallic upperparts which inhabit saltmarsh and other coastal habitats. They are winged and capable of flight. These beetles can produce a foul-smelling liquid when handled. This guide enables the identification of the three British species.



Tarsi have furrows on upper surface in all species

Pogonus luridipennis Yellow-backed Driftliner

Separated from the other two species by its **bi-coloured** appearance with **dark metallic green head and pronotum** and **yellow-brown elytra**. Legs and antennae are reddish-brown. A very distinctive species unlikely to be mistaken for any other British ground beetle.



6 - 8.5 mm

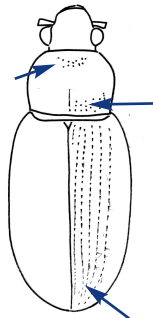


Pogonus luridipennis
Yellow-backed Driftliner

A scarce and local beetle found in saltmarsh habitats, often associated with clay, in Lincolnshire, North Norfolk and Dorset. It seems to have declined in recent years. There are old records from Devon, East Sussex, Essex, Kent, Gloucestershire, Somerset and Hampshire.

Pogonus chalceus Punctate Driftliner

Uniformly dark metallic green. The **pronotum has evenly spaced pits at base** and a few pits near the front edge. All **elytral striae fainter towards the apex**. Elytra **slightly shorter and more rounded at sides**. On average slightly smaller than *littoralis*.



Key identification features arrowed



5.5 - 7.3 mm

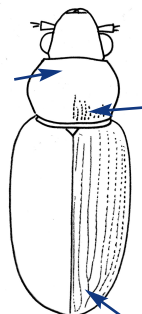


Pogonus chalceus Punctate Driftliner

A common species in saltmarsh and other coastal habitats in England and Wales. Occurs in lower saltmarsh zones than *littoralis*.

Pogonus littoralis Wrinkled Driftliner

Similar to *chalceus* but the **pits at the base of the pronotum are formed into longitudinal ridges in the middle**. There are **no pits near the front edge of the pronotum**. All **elytral striae distinct to apex, not fading at all**. Elytra **longer, more parallel-sided**. On average slightly larger than *chalceus*.



Key identification features arrowed



6.3 - 8 mm



Pogonus littoralis Wrinkled Driftliner

A scarce species in upper saltmarsh habitats between Lincolnshire and Glamorgan.

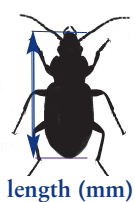
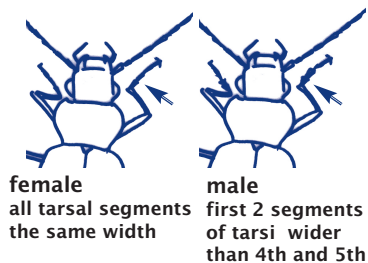
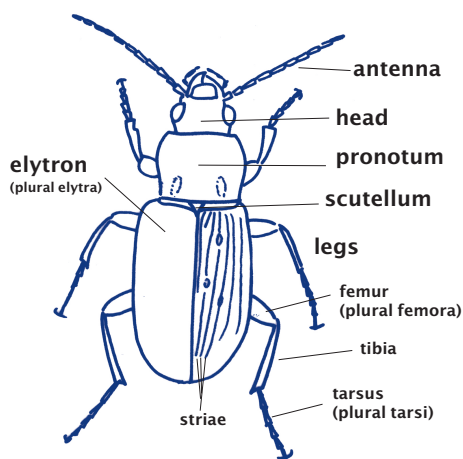
Finding Pogonus

These beetles can be found under stones and seaweed in saltmarsh habitats.

They are active between March and October but can also be found during the winter.



Typical *Pogonus* habitat in north Norfolk.



Tilting the beetle to view the striae on the apex of elytra - *Pogonus littoralis*.

Recommended books on British ground beetles

Martin Luff (2007), *The Carabidae (ground beetles) of Britain and Ireland, Handbooks for the Identification of British Insects, Vol.4, Part 2 (2nd Edition)*, Royal Entomological Society ISBN 978 090154 686 9

The essential guide to the identification of all the British species.

Martin Luff (1998), *Provisional atlas of the ground beetles (Coleoptera, Carabidae) of Britain*, Biological Records Centre ISBN 1 870393 41 4
Distribution maps of all the British species. An excellent aid when attempting to identify ground beetles.

Thanks to Oxford University Museum of Natural History for help during the preparation of this guide.